

Garden of Disorientation

MAY 19th to JUNE 9TH 2012

Cool Fresh Mint Garden

'Pop-up' events have become the place to be in London & for three weeks a former meat packing warehouse is transformed ...by mint!



Smithfield is renowned for the ghostly late-night movement of animal carcasses and more recently for the early-morning traffic of displaced revelers. Adding to the mix is this new internal garden space, the Garden of Disorientation.

Designed by (uncommon), well-known for the 'Forest' installation in SE1, the Garden of Disorientation will also feature in Clerkenwell Design Week. The garden will be a venue for debate, chatter and events relating to gardens, art & design and food

& drink. The talks will bring together practitioners from widely different spheres but whose work, or play, involves their love of gardens.

The Garden started with the help of some Smithfield butchers, delivering their unwanted pallets by fork lift - but instead of meat packing, the pallet towers have other ideas: they sprout with creeping mint, *Mentha spica* and set about replacing meat with greenery.

Contact: Deborah Nagan
deborah@uncommonland.co.uk

www.uncommonland.co.uk

A venue for the inaugural:



naganjohnson

A small architectural practice with a contemporary approach, adept at working in historic settings and with arts and hospitality projects, naganjohnson have a diverse portfolio. They combine a knowledge of architecture, interiors and landscape to make seamlessly integrated internal & external spaces. naganjohnson have organised the venue for the garden.

Contact: Michael Johnson
2 pontypool place
london SE1 8QF
t. 020 7633 0200
michael@naganjohnson.co.uk
www.naganjohnson.co.uk



Modern Garden Company

MGC is the only business in the UK to specialize in the supply of contemporary furniture and canopies to hotels, restaurants, super-yachts, universities, public buildings & corporate clients.

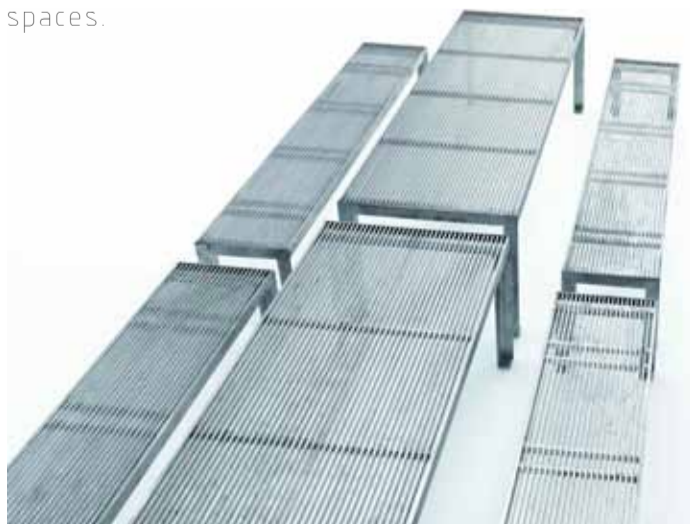
Products are sourced from across Europe. These unique Collections include Paola Lenti, Manutti, Tribu, Reichneberg+ Weiss, Extremis and Sunsquare.



Furnishing the Outdoors

The Modern Garden Company offer stylish contemporary furniture, canopies and accessories especially designed for commercial and landscape projects.

Robust and durable materials are combined to create stylish furniture that can be used in high impact commercial, semi public and landscape spaces.



Every piece is produced to the highest standard, many by artisan craftsmen, allowing for bespoke solutions for special projects and all meet our demands for ethical production, responsible sourcing of materials and recycling.

The Galvanised Series from Reichenberg + Weiss is an uncompromising collection of tables and benches, bistro furniture and low benches. Frames are of 8mm steel, the surface is a grid of 20mm box section steel. Hot dip galvanising is the best way of protecting steel against corrosion. When the steel is dipped in a bath of molten zinc the metals fuse together to form an iron-zinc alloy often creating a characteristic flower pattern across the surface.

Recent projects for the Galvanised series include, the Universities of Nottingham and Sussex and The Royal Shakespeare Company.

The Modern Garden Company
Lynne Isham T: 01279 653200
www.moderngarden.co.uk

Bed of Mint

by Lorna Goodison

A bed of mint beneath the window of the room where we sleep will render the morning air sharp and sweet.

Then we will roll over like the waves and wake to draw tea from the source springing beneath the window. Living sweet and sharp to each other.



Chelsea Fringe

The Chelsea Fringe festival is all about harnessing and spreading some of the excitement and energy that fizzes around gardens and gardening. The idea is to give people the freedom and opportunity to express themselves through the medium of plants and gardens, to open up possibilities and to allow full participation. It ranges from grassroots community garden projects to avant-garde art installations. Just about anything goes as long as it's interesting and about gardens, flowers, veg-growing or landscape.

www.chelseafringe.com/the-garden-of-disorientation/



Cubana - the Home of Mojitos in London



Cubana introduced Mojitos to the UK in the 1990s and has made literally hundreds of thousands since then - Cubana's Mojitos have also been enjoyed in their tens of thousands at events like Glastonbury, Carnival de Cuba, Thames Festival, Waterloo Carnival & the Waterloo Food Festival.

Cubana started when a former Conservative Treasury minister under Mrs Thatcher and John Major decided to set up a restaurant. It was to be Japanese, as he had worked in Japan, but after going to Cuba in the 1990s and tasting Mojitos, he was hooked and Cubana was born.

Fidel Castro was briefly a shareholder in Cubana - a shameless capitalist publicity stunt by the owner who registered shares in Fidel's name. Objections from the Cuban embassy and the need to buy containers of rum from Cuba put paid to that however.

Now, Cubana is coming to refresh **The Garden of Disorientation** this Summer with a fresh and delicious selection of Mojitos including their famous regular Mojitos along with fresh ginger and cucumber.

What's the secret?

First, Cubana freshly press their lime juice every day. They muddle this with fresh mint leaves and raw organic cane sugar - the type of sugar originally used in Cuba back in the nineteenth century when Mojitos were first made. Then they add genuine Cuban rum - but not just any rum. Cubana specially import their own brand of Cuban rum - Ron Caney - from Santiago de Cuba, the old capital of Cuba in the island's sultry south-east. Santiago is the soul of Cuba's music, rum and sugar industry - and Caney is an artisanal rum, very different from the industrial brands used in most bars... and, of course, they keep their prices reasonable!

So come and try Cubana's Mojitos at the Garden of Disorientation at Charterhouse St, Smithfield - and go and see them at Cubana in Waterloo too! You can enjoy not just Mojitos, but a wide selection of fresh tropical cocktails prepared with fresh passion fruits, mangoes, guava, strawberries and many other fruits.



Try their delicious, freshly-prepared Latin-American food too - all made with fresh, free-range ingredients - their new soft-serve gelato and tropical fruit ices are a must!

Cubana
48 Lower Marsh
London SE1 7RG
0207 928 8778



Portraits with Flowers (2003-5)

People's complex relationships with plants photographed



Jyll Bradley has often focused upon people's complex relationships with plants as a way of exploring ideas of connectivity and place. Bradley's works typically combine photography (often presented in light-boxes), text and sculptural elements. They are oblique cultural constructs where the emotional meets the formal, both containing and revealing the individual and collective human spirit.

Over several years Jyll held residencies in Guangzhou, China and Medellin, Colombia. During her time she met and interviewed many people who had a connection with plants or flowers. The arising portraits mark those times and conversations.

Lightboxes with duratrans images each 841mm(H) x 594mm(L) x 200mm(D) Portraits first shown Liverpool Biennial, 2004

<http://www.jyllbradley.net/>
<http://mummeryschnelle.com>



Little Sparta

May 23rd

Garden-inspired, bittersweet and unpretentious



'Close: Music for an exhibition' is the latest release by Little Sparta and the second on the Grey Gallery Label run by Susie Honeyman. The music is the culmination of the last few years recording at their studio in North London and performing at galleries & arts festivals while touring and writing with other projects (Mekons, St. Just Vigilantes); scoring for film & television (Day of the Triffids); and raising families.

Some of this music is the soundtrack to a film accompanying the exhibition, Close: A Journey in Scotland by photographer Allan Pollok-Morris which has been at the Chicago Botanic Garden, the US Botanic Gardens and is on the way to the New York Botanical Gardens in 2012. The exhibition focuses on land art and landscape design in Scotland, including Ian Hamilton Finlay's garden Little Sparta, through the photographs of Allan Pollok-Morris.

Press Enquiries:
Steve Blacknell (UK)
M: +44 (0)7 973 656 201
<http://www.littlesparta.com/Home>



Released 01 April 2012; Photography by Allan Pollok-Morris from his book 'Close: A Journey in Scotland'

Garden of Disorientation

The flowerbeds - paint before you plant
Duller & Stippl - are Vienna-based artists and
landscape designers.

Our paintings serve as a basis for planning perennial plantings, bringing unexpected findings and surprising interpretations that allow us to compose very new and individual flowerbeds.

In our workshops paintings are created in a multi-layer-technique with stencils and patternrollers on paper, encouraging a spirit of spontaneity. Participatory painting means to have fun together and to enjoy the beauty of colors and rythms of the jointly produced work.

The paintings evoke an ambiguous impression of the natural. With the help of participants we create a dense atmosphere of blooming flowers and thriving plants a perfect inspiration for perennial plantings. If you want to join us, just drop in and make an appointment.



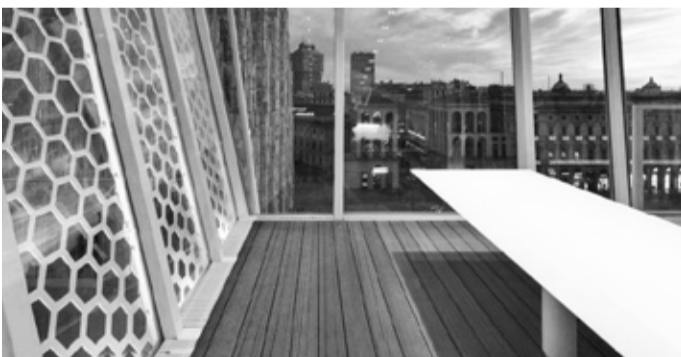
hannah.stippl@uni-ak.ac.at

Splendidly Decked Out



Ecochoice was created by Brazilian born Mike Bekin to promote and supply certified timber solutions for exterior projects. Working very closely with FSC forests in Brazil and Africa, Ecochoice are constantly looking into new species and timber products such as FSC Plato Wood Frake, the only thermo modified exotic hardwood (FSC).

For the Garden of Disorientation, we will be showcasing our first ever composite product: Greenwood heated decking. Made in Italy, it has 70% timber content (PEFC certified) and highest quality PE. This ensures its colour won't fade and your decking will remain looking straight and pretty. If you require any certified timber such as cladding or decking for your project, please don't be shy and contact us.



Contact: Mike Bekin

Email: info@ecochoice.co.uk

www.ecochoice.co.uk

Tel: 0845 638 1340

Ten Sheds

Designed by Deborah Nagan for the tenth anniversary of the Festival International de Jardins 'Every garden...' presents ten elements of garden design that perhaps explain some of the many layers that gardens consist of.

This dissected garden, displaying its component parts, is also a secret tour of a garden which allows the visitor to linger in each shed and reflect upon the meaning hidden in a garden.
Metis, Quebec, June-Sept 2012.

deborah@naganjohnson.co.uk

Contact: Alexander Reford www.jardinsdemetis.com



A Delicate Balance

A scented mobile sculpture that plays with your senses

The Mobile suggests how fragile and delicate the ecological balance of nature is. The installation is a mobile structure of thin metal bars, from which scented mints hang at different heights. To involve people as much as possible, the installation will be placed at a height that will allow all the plants to be touched and smelt, as well as allowing the whole structure to move. Just the slightest variation of weight or movement in the Mobile produces a change in the balance of the whole structure, so in the environment any small variation produces an alteration of the balance between living beings.



A project by Michela Pasquali for Linaria, an Italian NGO involved in promoting a new garden culture.

<http://www.linariarete.org/>
info@linariarete.org



"The City of London Corporation is pleased to support the Chelsea Fringe Festival by providing the former warehouse premises at 57-61 Charterhouse Street to create 'The Garden of Disorientation' - making creative use of this unusual industrial property."

Contact: Patrick Durcan

www.cityoflondon.gov.uk/Corporation

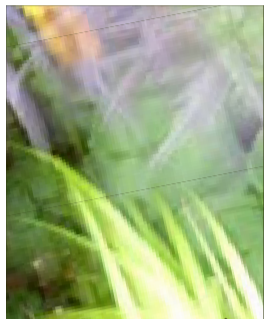


Uncommon: stories for spaces

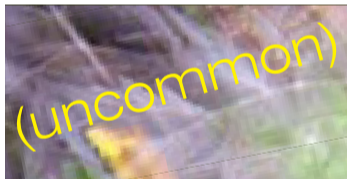


Drawing out the story embedded in the place and its landscape is the task of a new consultancy: (uncommon).

With experience of complicated urban gardens to large city-scale schemes, the team at (uncommon) create landscape with a many-layered narrative. From small to large schemes, finding a strong 'sense of place', so important to our understanding and love of a place, is the key to their practice.



(uncommon) have made installations and small festival gardens as well as taken big masterplans through planning. They are currently designing a flood restoration scheme in Quebec and finishing a tight, tiered garden in Primrose Hill. This image is the Fritillus Garden, a re-created watermeadow in Luxembourg.



Deborah Nagan
t: 0777 381 6622
www.uncommonland.co.uk

Farm Fresh Steve's Leaves



Dr Steve Rothwell and his team are dedicated to sustainable and environmentally Nature Friendly Farming. They are the first and only fresh produce farms to have been awarded Nature Friendly Farming status by Conservation Grade. This type of farming is scientifically proven to significantly increase biodiversity and restore wildlife to the countryside. Conservation Grade is a unique sustainability protocol where 10% of the land is dedicated to nature, building special habitats to encourage wildlife.



As well as caring about the environment, Steve and the team have developed a special chiller that cools the leaves incredibly quickly. They go from being cut to 2°C in just 60 minutes. Fresher leaves have more flavour, better texture and they're better for you. For Steve and his team, nothing quite as much fun as dreaming up new and exciting varieties of leaf. So if you ever see them staring out of the window, you know what's going on.

T: 0800 035 5559
www.stevesleaves.co.uk



Close: nearer to heaven in a garden

Allan Pollok-Morris's is known for exclusive photography of landscape, land art and design. Allan's work is grounded with a simple inspiration taken from the way people reveal themselves in the places they make, he is very careful to communicate this with integrity so the scene in the photograph is true to the original subject. His choice of moment looks for an emotional connection between the subject and the viewer. Meet Allan and see his work at a special screening for The Garden of Disorientation. Date TBA.

Contact: Allan-Pollok Morris www.ap-m.co.uk/index.php



**CLERKENWELL
DESIGN 22-24
WEEK MAY 2012**

SPONSORED BY JAGUAR

Garden of Disorientation could not have happened without kind contribution & great help from all of our friends at:

THE MODERN GARDEN COMPANY

furnishing the outdoors

(uncommon)



CITY OF LONDON



GARDEN OF DISORIENTATION
an (UNCOMMON) project for the
CHELSEA FRINGE

59 CHARTERHOUSE STREET EC1M
**OPEN 11AM TO 6PM DAILY
MOJITO BAR OPENINGS
UNTIL 10PM:**

Sat 19th and Sun 19th May
Tues 22nd to Thursday 24th May
Sat 26th & Sun 27th May
Wed 30th May to Sat 2nd June
Wed 6th to Sat 9th June

FOLLOW @DEBNAGAN
ON TWITTER



Wall Flowers for scent & flavour

Jasmine will be the main constituent in a floral & fragrant green wall behind the mojito bar. Made from recycled plastic bottles the Woolly Pockets allow each plant's root system to breathe, thereby providing optimal growing conditions for your plants, indoors as well as outdoors.



www.gardenbeet.com Contact: John Connel 020 3397 2377